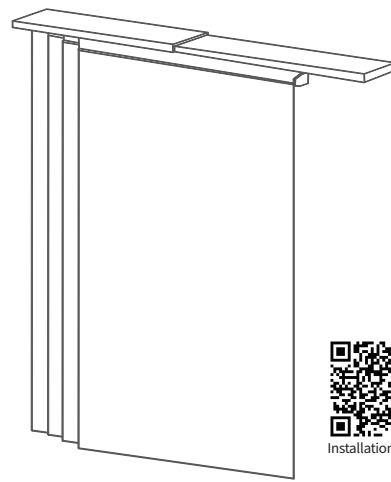


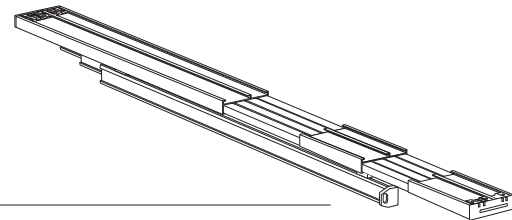
INSTRUCTION

Adjustable 4 Rail Panel System

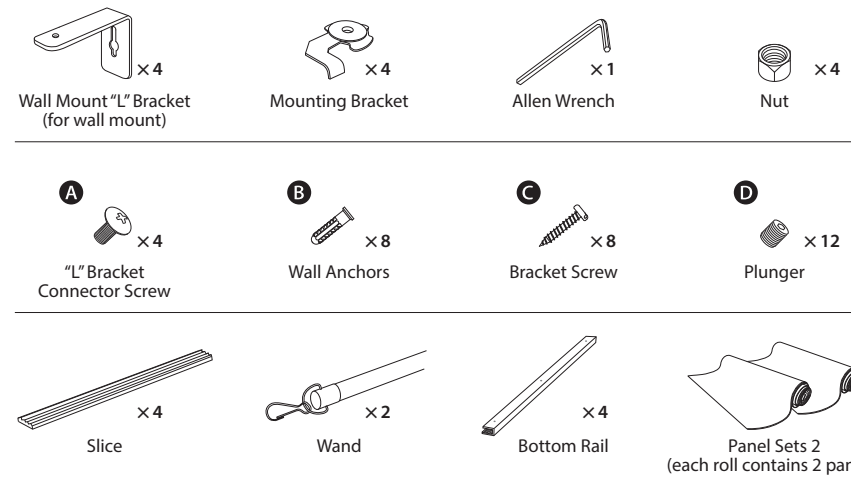


Installation video

Parts

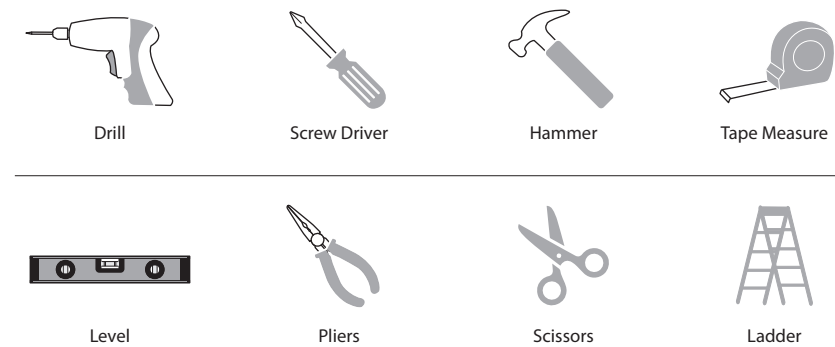


Adjustable Quad-Rail Track × 1



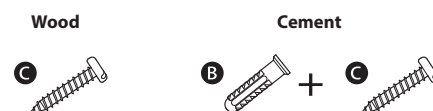
Check all pieces before installation.
Please contact GoDear Design directly if your product is missing items or parts.

Prepare Tools



Remark

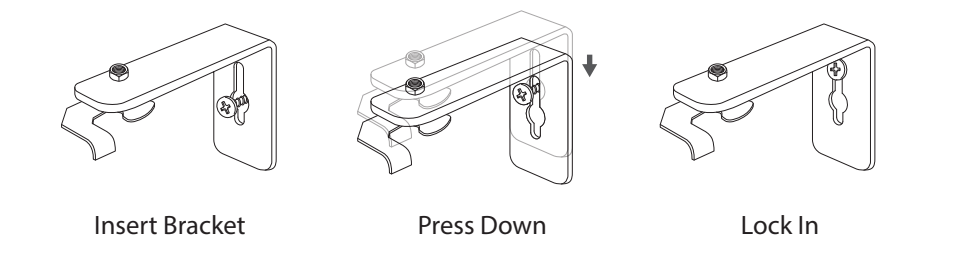
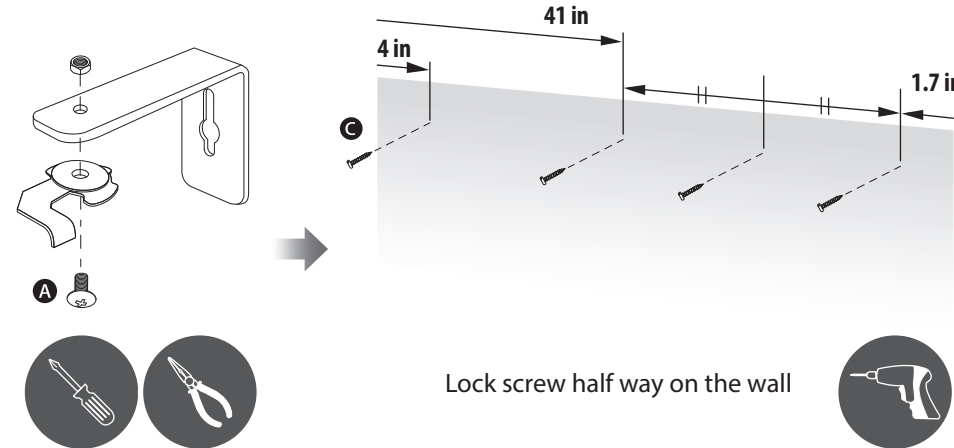
Screw Suggestion



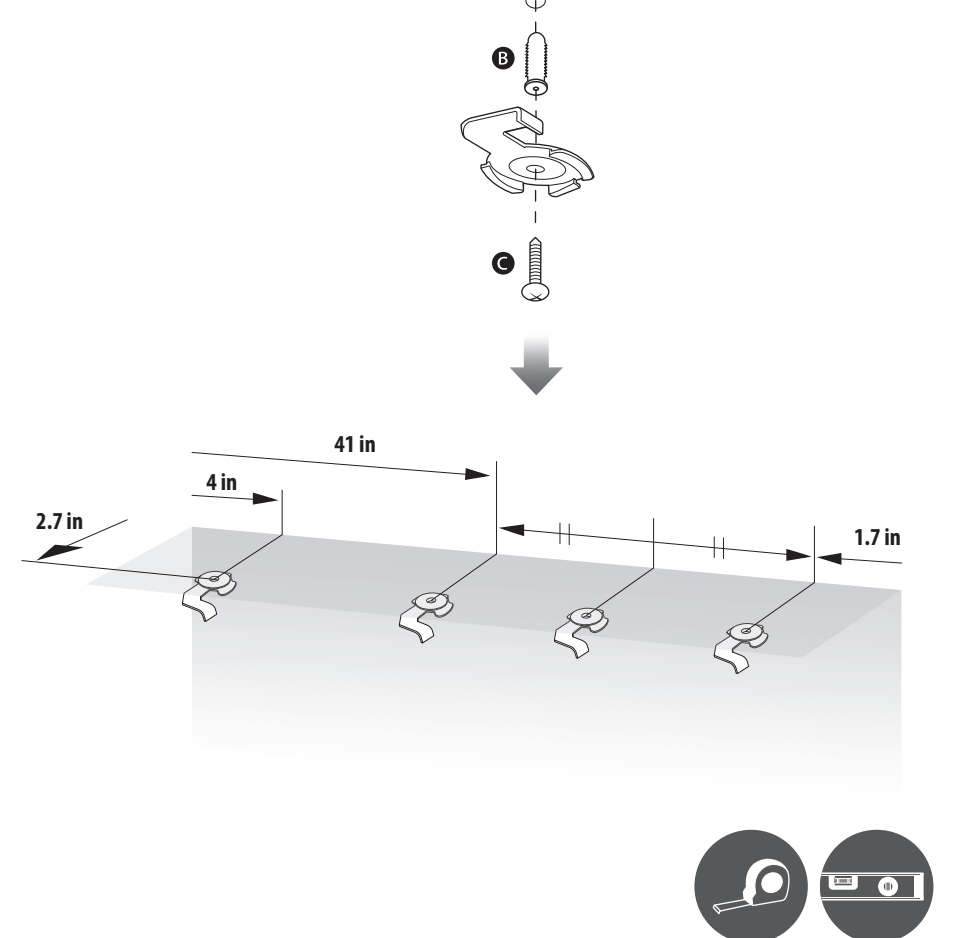
Installation

Step 1 - Install the Brackets (Wall Mount or Ceiling Mount)

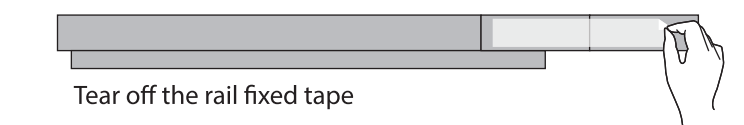
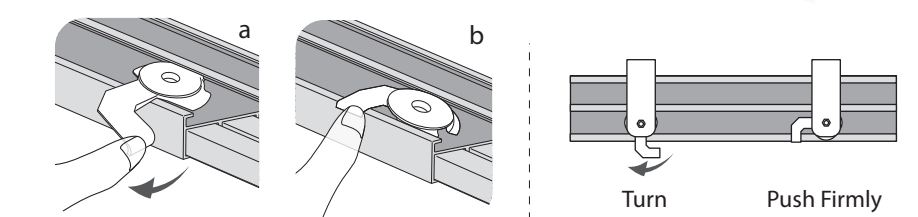
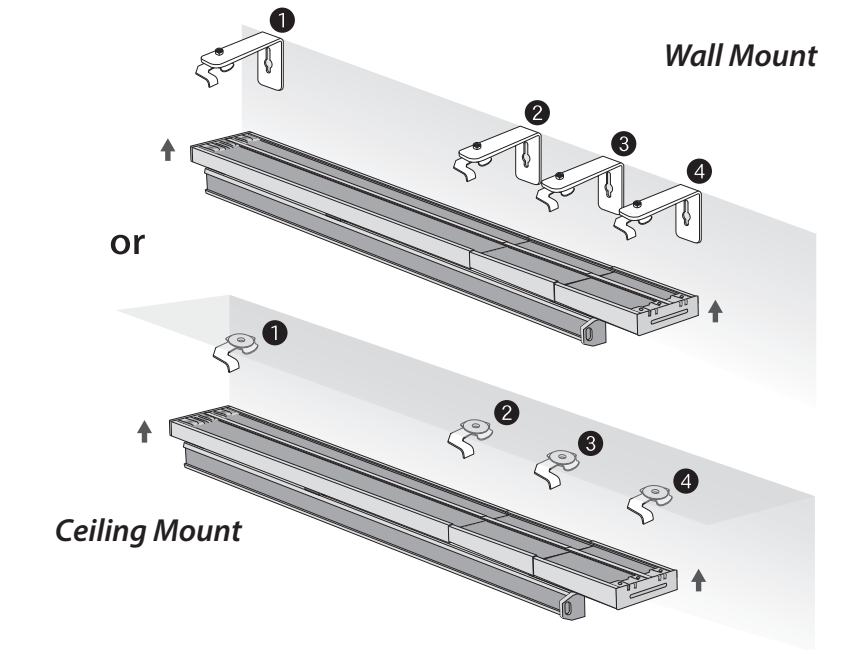
Wall Mount



Ceiling Mount

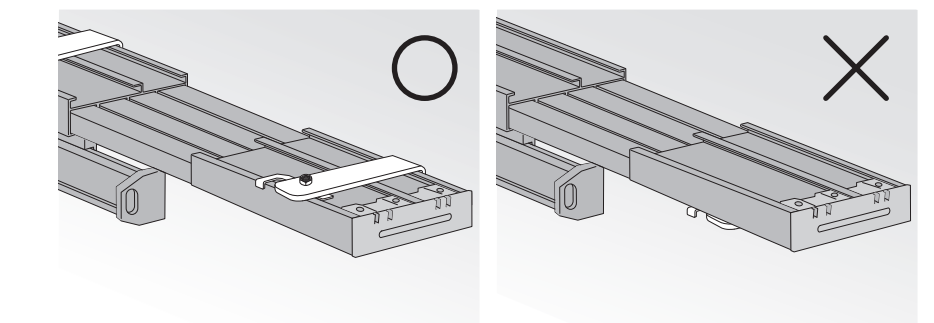


Step 2 - Attach the Mounting Brackets to the Track



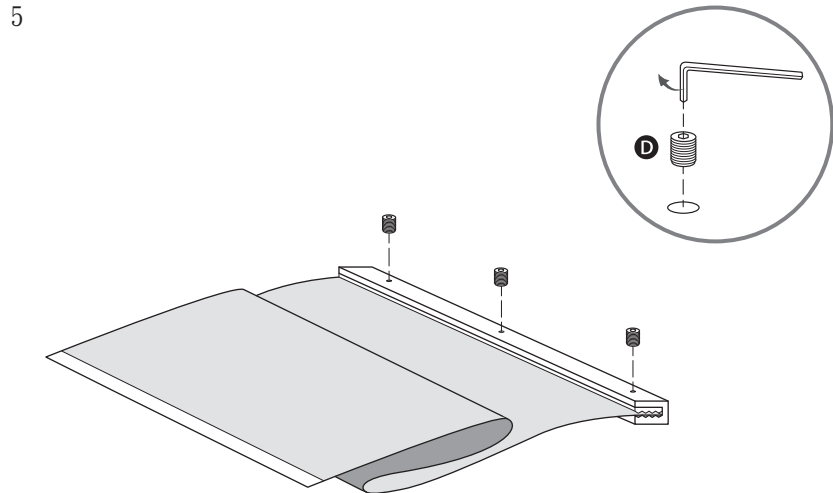
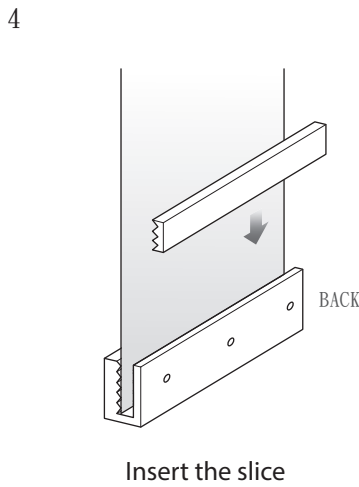
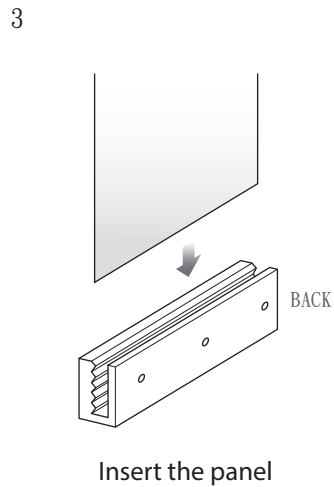
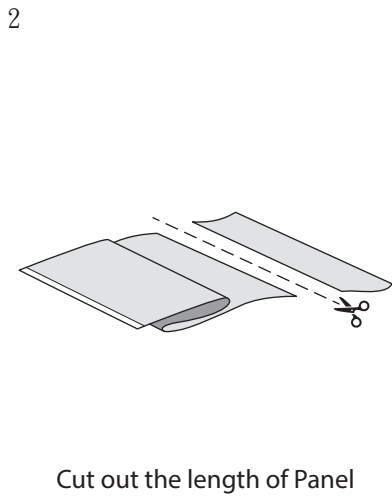
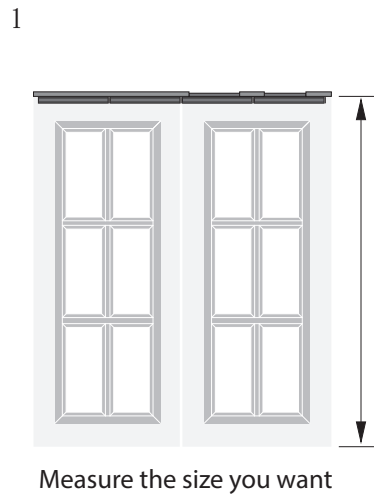
Extend the Track to the wanted length, then push firmly the 4th Bracket

DO NOT over extend the track as if may cause to separate completely.



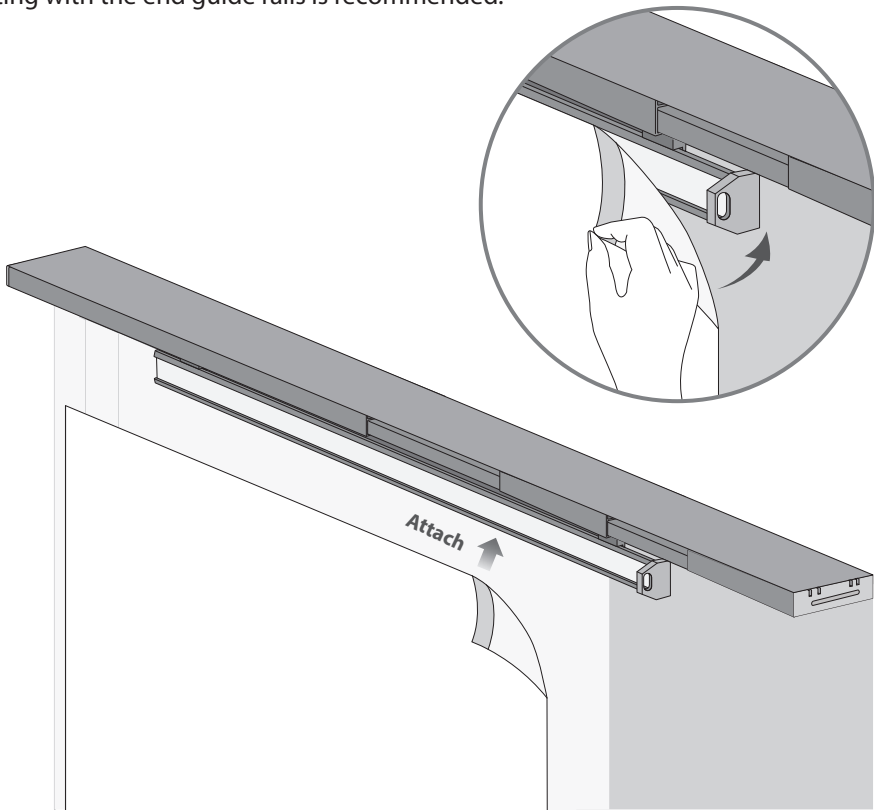
DO NOT put the Track upon the Brackets.

Step 3 - Sliding Panel

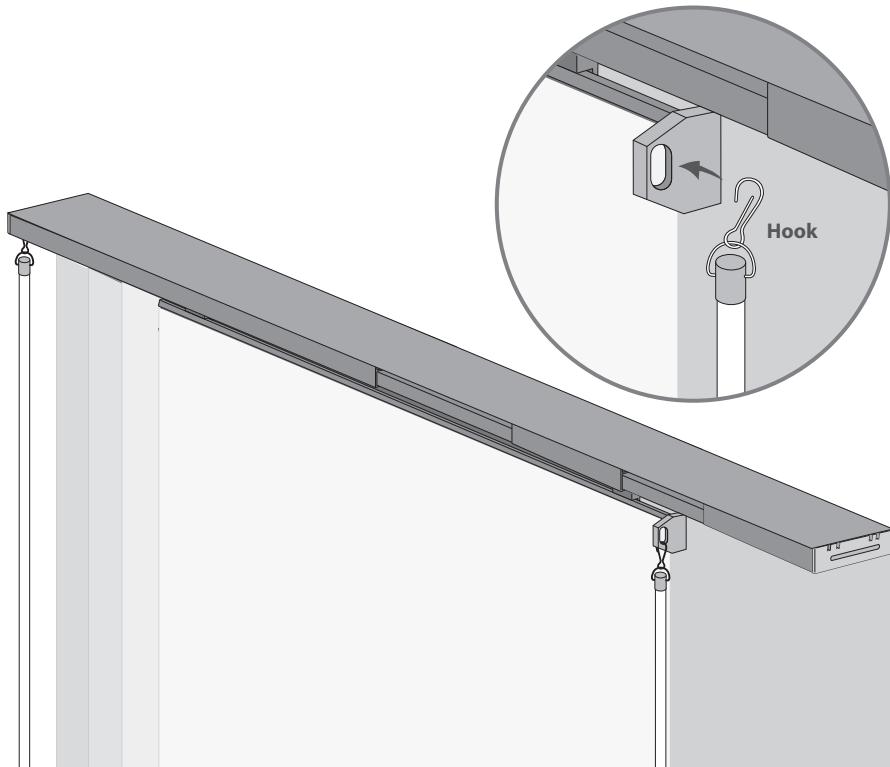


Step 4 - Attach the Panels

Attach fabric panels to the pre-installed guide rails of the track using durable Velcro. Starting with the end guide rails is recommended.



Step 5 - Attach the 2 wands to the leading and ending guide rails



Tips

Best 45 degree , use wand to open and close fabric panels with ease.

